

*Spring-Summer is closing soon
-hurry last days*

*Entries are pouring in—is
your entry coming?*



AAL SPRING—SUMMER COMPETITION

IS CLOSING ON 17TH OCTOBER 2011

YOU STILL HAVE TIME TO ENTER—ITS FUN AND YOUR BEAUTIFUL IMAGES ARE ON-LINE FOR 12 MONTHS, PLEASE JOIN US,

YOU MAY ALSO HAVE THE OPPORTUNITY TO BE SELECTED TO ENTER

IN THE AAEA FOR NEXT YEAR—AND YOU JUST COULD BE THE NEXT WINNER!

Email your entries with size, medium, title to jan.lowe@camberwellart.com.au

Watercolour SIG

18TH OCTOBER 2011

07:00pm TO 09:30pm



What Watercolour SIG is all about—the Watercolour Special Interest Group (WSIG) has been meeting each third Tuesday evening for about 2 years, with usually between 10 and 20 attendees. It doesn't seem to matter how many people come along, there's always something to talk about and they are always enjoyable, it is about meeting fellow artists, sharing ideas and events, new products and generally catching up.

Over the past few months we have discussed Daniel Smith paints, ways to fix a painting that needs *something* but you're not sure what, using glazing, cropping and other techniques, papers, brushes, etc. Alan Rawady gave us a *demonstration "making marks on paper" one night (thank you again Alan—it was most enjoyable)*. Sometimes we had homework, where we picked a topic, such as reproducing or reinterpreting a work by one of the early 20th century Australian watercolour artists, and the results were quite amazing, it also led to great discussion which ensues.

Limited colours

Painting with limited colour—1 colour, 2 colours and finally with 3 colours—samples shown here -

In recent meetings, we have been looking at painting with one, two or three colours. The reason behind this task was to try to make a series of pictures that could each be considered a painting in its own right, also comparing the effect that the use of different colours can make on each variation.

Jane Howart's—
Fruit



Ray Keynon's
Tree



Jan Lowe's
running foal



The task for this month—

We will be discussing, making and using our own colour charts and also looking at street art and stencil making and the impact this art has had on the art community.

In *November* we will be looking at *making art on a computer!*



We look forward to seeing you all on Tuesday 18th October at 7.00pm

Ray Kenyon

Watercolour SIG Convenor

A special thanks to Jan Lowe who always assists with the organisation of the evenings!

It's All GREEK To Me

Exhibition & sale from a tour to the Greek Isles



Opening Saturday 5 November, 2pm
Runs until 13 November

ALL WELCOME

Artists

| | |
|----------------|-----------------|
| Gwen Bullock | Pam Byrne |
| Eric Harvey | Regina Hona |
| Stephen McCall | Linda McEwan |
| Anne Melloy | Rosemary Morgan |
| Helen Permezel | Sheryl Stuart |
| Linda Treeby | |

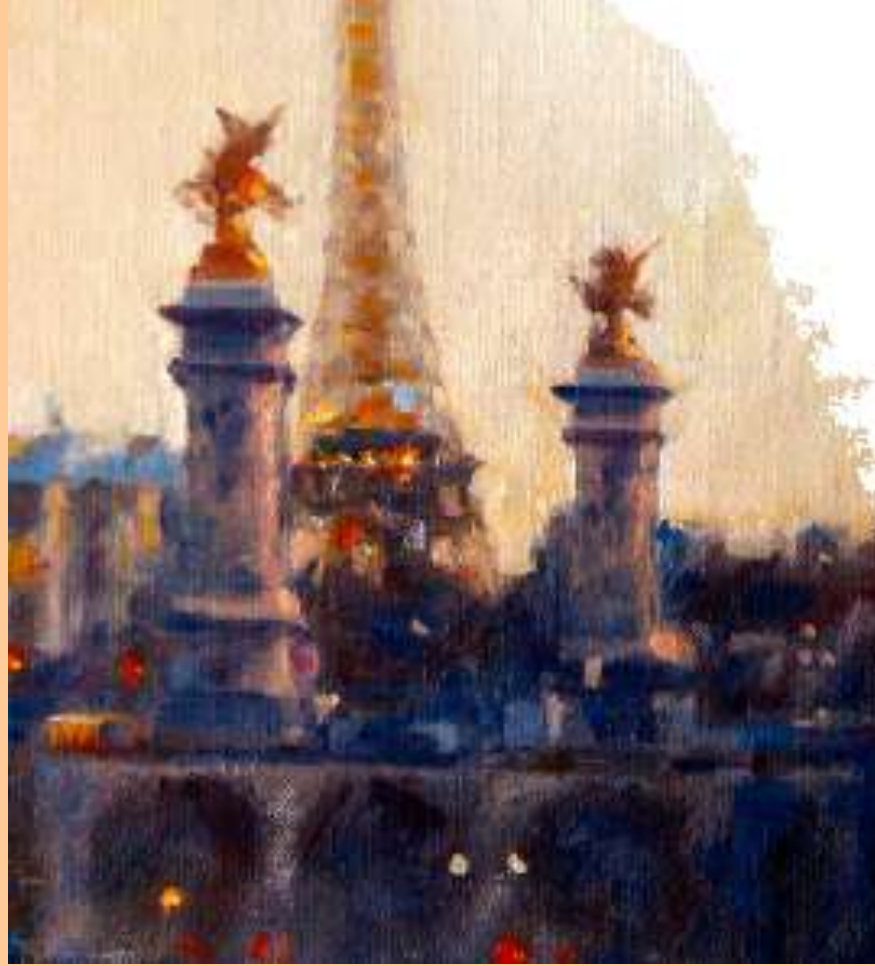
These artists set out to capture the soul of the Greek Isles after a recent tour. Having experienced the vibrant colours, culture, landscape and wonderful hospitality of Greece they are now telling their story in paint. You will see visions of Kos, Leros, Lipsi, Patmos and Kalymnos, which belong to the Dodecanese Islands.

MAS Gallery

■ 1297-99 High Street, Malvern 3144
Open Daily: 12pm – 5pm

■ Enquiries: 0419 872 475

10% Donation from sales to go to **Agapi Care Inc.** They provide respite centres and residential care for Greek Australians with a disability.



HUNT, HYDE, BRUERE,
HEWITT, DANSEY

EXHIBITION & SALE OF PAINTINGS

12-25 OCTOBER 2011

VAS Galleries
430 Albert Street
East Melbourne 3002

MUST SEE EVENTS IN
OCTOBER & EARLY NOVEMBER

MAST E RFRAME

PICTURE FRAMING

HIGH QUALITY CREATIVE CUSTOM FRAMING

Quality, elegant framing that will not only enhance your artwork, but will protect and preserve it long term.

Huge range of mouldings and matboards available, including 100% Cotton Rag

From individual pieces to whole exhibitions framed at competitive rates
Framing of original artwork, needlework, memorabilia, medals, objects, sports jumpers, photography, prints, certificates etc

If you can't come to our studio, we will gladly come to you -

Ask about free pick up and delivery (conditions apply)

Contact Tony at

28 Ross Pincott Drive, Mooroolbark, Vic. 3138

Phone: 9727-4294 Mobile: 0408 316 313

Email: t.weston2@bigpond.com



Professional Picture Framers Association Member

OLGA PASECHNIKOVA INSIGHT EXHIBITION



4 NOVEMBER
OPENS 7PM-9PM
WILNS 4-11 NOVEMBER

Steps Gallery
62 Lygon St, Carlton South
Ph: (03) 9660 3577
Mon-Fri 11-5pm Sat/Sun 11-4pm

www.olgapasechnikova.com
Commissions and Art Teaching see website

AGRA EVENT

"TWENTY MELBOURNE PAINTERS"

Greg Allen, Herman Pekel,

David Taylor &

Clive Sinclair

Demonstration Day

6th November 2011

Camberwell RSL

call AGRA Offices for more info

0398825859

SENIOR ART SUPPLIES

THE FINE ART SPECIALISTS

having trouble getting in
shop online

WWW.SENIORART.COM.AU



Malvern
1310 Malvern Rd
Ph 9804-3404

Melbourne
21 Degraeves St
Ph 9639-6662

Frankston
7c Station St
Ph 9783-6044

Painting Portugal Art Tour 2012

with Award winning Artist Ev Hales



- Porto - Douro Valley – Pinhão - Óbidos - Alcobaça - Peniche - Lisbon
- 17 to 30 September 2012
- €2,600 per person (approx A\$3600)
- Includes tuition, accommodation, gourmet meals with wine, river cruise & private coach

More information and a booking form can be obtained from tour leaders and Portugal residents Pam and Paul Adams at pbadams@ozemail.com.au or at www.pamadamsart.com



ARE YOU PLANNING A PAINTING HOLIDAY IN 2012 – WHAT ABOUT
CAMBODIA WITH THE EFFERVESCENT CRAIG PENNY!

Painting & Arts Holiday

"An adventure you will not forget..."
Brochure online or call 9879 1923 • Early Bird Discounts • Limited places
July and September 2012

Angkor Wat Cambodia

A 10 days/9 nights Painting Holiday Retreat with Award Winning Artist, Craig Penny.



Choose your accommodation style
Get an itinerary, prices and accommodation styles on our website

Enquiries 9879 1923
www.therivergarden.info


**The
River Garden**
Siem Reap